

FUN | SPORT | WATER  
**SUMMER 2012**



**DEVILCEAN**





**SHORTY TRAFFIC**

Colour: Blue, Red  
Size: XS, S, M, L, XL, XXL, XXXL  
• Allover 2.0mm neoprene shorty,  
100% double nylon for extra strength  
• Standard neoprene • Flat stitch  
construction • Seamless armpits  
Blue: 463012001 - Red: 463012002



**LONG JOHN VELOCITY**

Size: S, M, L, XL, XXL  
• 2.0mm neoprene wetsuit and jacket  
• Flat stitch construction • Seamless  
armpits  
463009009



**NEO SHORT**

Size: S, M, L, XL, XXL  
• 2.0mm neoprene short with buckle  
adjustment • 100% double nylon for  
extra strength • Super stretch panels  
• Glide skin seals for easy entry/exit  
• Flat stitch construction  
463009008



**RASH GUARD**

Size: S, M, L, XL  
• UV protection, UPF 50+ rating  
• Comfortable, soft and 4-way stretch  
fabric • Flat stitch construction  
463111001



**FULL SUIT TRAFFIC**

Colour: Blue, Red  
Size: XS, S, M, L, XL, XXL, XXXL  
• Allover 2.5mm neoprene suit, 100%  
double nylon for extra strength  
• Standard neoprene • Flat stitch  
construction • Seamless armpits  
Blue: 463012003 - Red: 463012004

MEN (THESE SIZES ARE FOR REFERENCE ONLY)							
	Euro size	Height inch	Height cm	Chest inch	Chest cm	Waist inch	Waist cm
XS	46	5'4" - 5'6"	163 - 168	34" - 37"	86 - 94	26" - 30"	66 - 76
S	48	5'6" - 5'8"	168 - 173	35" - 38"	88 - 97	27" - 31"	69 - 79
M	50	5'8" - 5'9"	173 - 175	36 1/2" - 39 1/2"	93 - 100	29" - 33"	74 - 84
L	52	5'9" - 6'1"	175 - 180	38" - 41"	97 - 104	30" - 34"	76 - 86
XL	54	6'1" - 6'3"	180 - 183	38 1/2" - 41 1/2"	98 - 105	31" - 35"	79 - 89
2XL	56	6'3" - 6'4"	183 - 185	41" - 43 1/2"	104 - 110	33" - 37"	84 - 94
3XL	58	6'4" - 6'5"	185 - 187	43" - 44 1/2"	109 - 115	35" - 39"	86 - 96

WOMEN (THESE SIZES ARE FOR REFERENCE ONLY)							
	Euro size	Height inch	Height cm	Chest inch	Chest cm	Waist inch	Waist cm
XS	34	5' - 5'2"	152 - 157	27" - 31 1/2"	69 - 80	22 1/2" - 26 1/2"	57 - 67
S	36	5'2" - 5'3"	157 - 160	29" - 32 1/2"	74 - 83	24" - 27 1/2"	61 - 70
M	38	5'3" - 5'5"	160 - 165	32" - 34 1/2"	81 - 88	25" - 29"	64 - 74
L	40	5'5" - 5'6"	165 - 168	32 1/2" - 35 1/2"	83 - 90	27" - 30 1/2"	68 - 77
XL	42	5'6" - 5'8"	168 - 173	33" - 36 1/2"	84 - 93	28 1/2" - 31"	72 - 79

YOUTH (THESE SIZES ARE FOR REFERENCE ONLY)							
2XS	XS	S	M	L	XL	XXL	Lengte cm
98-104	110-116	122-128	134-140	146	152-158	164	Age
2-4	4-6	6-8	8-10	10-12	12-14	>14	



**SHORTY EDEN LADIES**

Size: XS, S, M, L, XL  
• Allover 2.0mm neoprene ladies  
shorty • Standard neoprene • Water  
repellent mesh body • Flat stitch  
construction • Seamless armpits  
463009003



**SHORTY YOUTH**

Size: XXS, XS, S, M, L, XL, XXL  
• 2.0mm neoprene shorty for juniors  
• 100% nylon for extra strength •  
Flat stitch construction • Seamless  
armpits  
463011002



**GOGGLE**

• Unique and comfortable design • PC  
double lens with anti-fog • protection  
rate UV400  
464211001



**FLOATABLE GLASSES**

• Unique and comfortable design  
• Lens protection rate of UV400  
464209001



**NEO SHOES**

Size: 3 up to 12  
• 2.0mm neoprene shoes • Ideal for  
all watersport activities • Comforta-  
ble and warm • Airprene construction  
for extra ventilation  
463008003



**NEO BOOTS**

Size: 5 up to 12  
• Inner sock for warmth • Reinforced  
heel for stiffness • Rough sole provi-  
des excellent grip  
463009005



**PROJECT GLOVES**

Size: XS, S, M, L, XL, XXL  
• Velcro wrist strap for additional  
comfort • PVC knuckle guards  
• Non slip hand palm  
463408001



### NYLON SIDE ENTRY VEST

Size: S-M, L-XL, XXL-XXXL  
 • CE-approved according to ISO 12402.5 • Nylon floating device  
 • Thick PVC foam protects chest from scratches • D-ring for emergency cord attachment  
 462412018



### PROMO VEST

Size: Universal  
 • CE-approved according to ISO 12402.5 • Nylon floating device  
 • One size fits all  
 462412011



### ALLROUND VEST

Colour: Black, Yellow  
 Size: S, M, L, XL, XXL, XXXL  
 • CE-approved according to ISO 12402.5  
 • Nylon floating device  
 Black: 462412002 - Yellow: 462412003



### BEST VEST

Colour: Red, Blue  
 Size: S-M, L-XL, XXL-XXXL  
 • CE-approved according to ISO 12402.5  
 • Nylon floating device • Nylon side panels for adjustability • Fully adjustable straps for a better fit  
 Red: 462412012 - Blue: 462412013



### EASY BOATING PACKAGE

Content: 2 x S-M, 3 x L-XXL  
 • 5 Nylon boating vests complete with ventilating transparent bag • 100N CE-approved according to ISO 12402.4  
 • Horseshoe style • Reflective panels and non clog whistle for safety  
 462412016



### NEOPRENE SIDE ENTRY VEST

Size: S, M, L, XL  
 • CE-approved according to ISO 12402.5 • Neoprene floating device  
 • Comfortable soft PVC foam • Extra padded side panels for protection • PVC molded patches on the chest for extra protection • Pull over vest with side zipper • Semi integrated webbing straps • Large armholes for better reach and mobility • D-ring for emergency cord attachment • Mesh panels for water drainage  
 462412010



### VICE VEST

Colour: Blue, Red  
 Size: XS, S, M, L, XL, XXL, XXXL  
 • CE-approved according to ISO 12402.5  
 • Neoprene floating device • Thin panel for more maneuverability • D-ring for emergency cord attachment • Mesh panels for water drainage  
 Blue: 462412008 - Red: 462412007



### ANGEL VEST LADIES

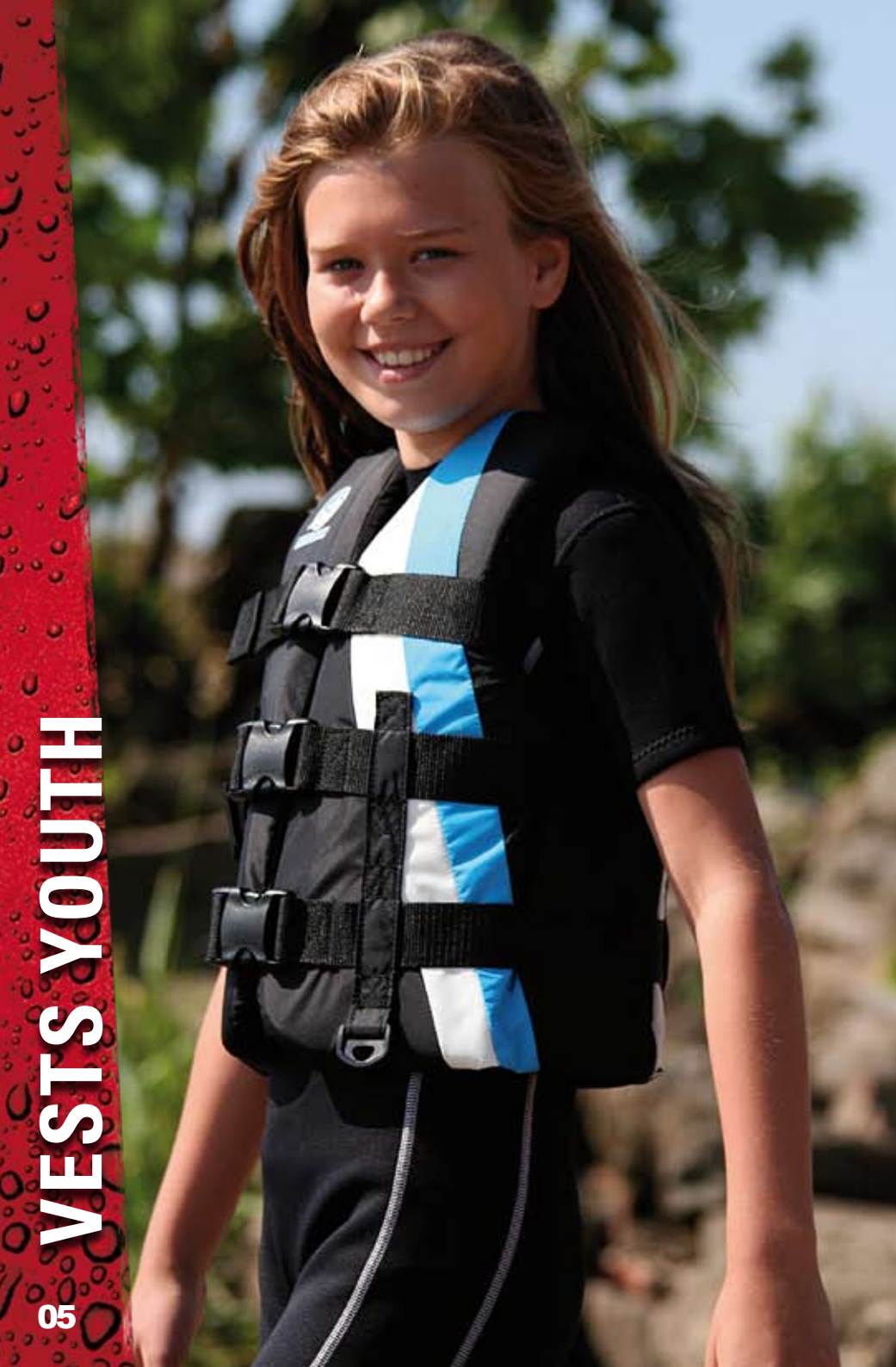
Size: XS, S, M, L, XL  
 • CE-approved according to ISO 12402.5 • Neoprene floating device  
 • Thin panel for more maneuverability • D-ring for emergency cord attachment • Mesh panels for water drainage  
 462412009



### DEVOCEAN VESTS (THESE SIZES ARE FOR REFERENCE ONLY)

		XS	S	M	L	XL	XXL	XXXL	S/M	L/XL	XXL/XXXL	UNIVERSAL
VICE JACKET	CHEST	70-80 CM	80-90 CM	90-100 CM	100-110 CM	110-120 CM	120-130 CM	130-140 CM				
	WEIGHT	40-50 KG	50-60 KG	>60 KG	>70 KG	>70 KG	>70 KG	>70 KG				
PROMO VEST	CHEST											75-130 CM
	WEIGHT											40-100 KG
EASY BOATING VEST	NEWTON								78 N	113.5 N		
	WEIGHT								50-60 KG	>60 kg		
ANGEL VEST	CHEST	69-76 CM	73-83 CM	83-91 CM	91-99 CM	99-106 CM						
	WEIGHT	30-50 KG	40-60 KG	50-70 KG	>60 KG	>70 KG						
ALLROUND VEST	CHEST			80-100 CM	90-100 CM	100-110CM	110+ CM	120+ CM				
	WEIGHT			80-90 CM	>70 KG	>70 KG	>70 KG	>70 KG				
BEST VEST	CHEST								80-100 CM	100-110 CM	110-130 CM	
	WEIGHT								>70 KG	>70 KG	>70 KG	
NEOPRENE SIDE ENTRY	CHEST		75-90 CM	85-100 CM	95-100 CM	105-120 CM						
	WEIGHT		40-50 KG	50-70 KG	>70 KG	>70 KG						
NYLON SIDE ENTRY	CHEST								80-100 CM	100-110 CM	>120 CM	
	WEIGHT								50-70 KG	>70 KG	>70 KG	





**BEAT VEST YOUTH**  
Size: Universal  
• CE-approved according to ISO 12402.5 • Nylon youth floating device 462412017



**ALLROUND VEST YOUTH**  
Colour: Yellow, Black  
Size: Universal  
• CE-approved according to ISO 12402.5 • Nylon floating device  
Yellow: 462412005 - Black: 462412004

YOUTH VESTS (THESE SIZES ARE FOR REFERENCE ONLY)				
		UNIVERSAL	INFANT	CHILD
BEAT YOUTH VEST	CHEST	60-70 CM		
	WEIGHT	30-40 KG		
ALLROUND YOUTH VEST	CHEST	60-70 CM		
	WEIGHT	30-40 KG		
VICE YOUTH VEST	CHEST	63-73 CM		
	WEIGHT	30-40 KG		
BUMBLEBEE SAFETY VEST	WEIGHT		<20 KG	20-30 KG



**VICE VEST YOUTH**  
Size: Universal  
• CE-approved according to ISO 12402.5  
• Neoprene floating device • Thin panel for more maneuverability • D-ring for emergency cord attachment • Mesh panels for water drainage 462412006



**BUMBLEBEE SAFETY VEST YOUTH**  
Size: Infant, Child  
• 100N CE-approved according to ISO 12402.4 • Neoprene safety vest with collar • Soft and comfortable PVC foam • Crotch straps • Reflecting panels to make the vest more visible • Whistle included 462412001



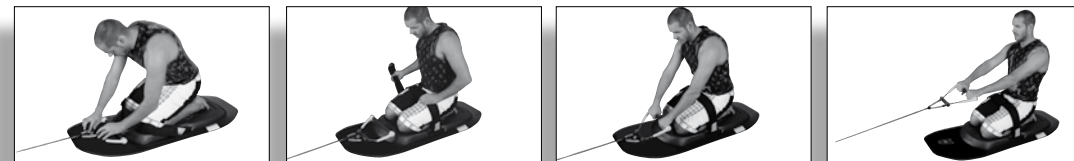
**TRIUMPH**  
• Handle-hook allows you to get up easy and quickly • Bevelled edge • Ergonomic kneepad • Strong 3.3" webbing strap, neoprene padded, with easy-opening handle • Includes shock-strap which absorbs big blows on the water 462511001



**TRIUMPH PACKAGE**  
Devocean Triumph Kneeboard + Promo Vest + Recreational Rope + Transp. Bag 468811002

KNEEBOARDS	
	TRIUMPH
LENGTH	143,5CM
WIDTH	53,5CM
WEIGHT	6KG
HANDLEHOOK	YES

**HANDLEHOOK**  
Instruction for the Handlehook







#### PROCEED 141 PACKAGE

Proceed 141 + Explore Bindings + Rope + Transp. Bag  
Size Explore Bindings: Standard, XL  
The easy to ride Proceed was designed to help teach new riders the fundamentals of wakeboarding while providing a super fun time with family and friends. With a wide rounder profile than most boards, deep water starts and smooth carving are a snap. These features along with a smoother continuous rocker help to ensure smooth transitions and stable pops off the wake. With its smooth and stable shape, the Proceed helps make wakeboarding a fun and easy to learn sport everyone wants to have there first few times out on the water • Two 1.7" plastic fins • Convex bottom / Flow base • 2.3" continuous rocker • Wider base • Venturi stabilizing tunnel • 8" insert setup  
468811004



#### WAKEBOARD BAG

Size: 56" / 142cm  
• Heavy duty polyester bag • King size zipper for easy access  
462211001

#### WAKEBOARDS

	PROCEED	ATTITUDE
LENGTH	141	139
TIP/TAIL WIDTH	26.7	26
CENTER WIDTH	43.2	41
ROCKER	CONTINUOUS	CONTINUOUS
BOARD LEVEL	BEG. - ADV.	BEG. - ADV.
RIDER WEIGHT	59-105	50-90

#### WAKEBOARD BINDINGS

	STANDAARD	XLARGE	XS/S	M/XXL
ACCESS WAKE				
EXPLORE	38,5-45	43 - 48	33-40	40,5-48

#### EXPLORE BINDINGS

Size: Standard, XL  
• The adjustability and easy entry make the Explore binding unique in its price range • Because of the one piece overlay this binding can be used by a wide variety of users • The front lace is easy in use and perfect to tighten the bindings to your demands  
• 8" plate  
463910001



#### ACCESS WAKE SANDALS

SIZE: XS/S, M/XXL  
• Designed for the family oriented wakeboarders • Easy to get in and out of on the ski platform as well as in the water It's universal size fits all, while still providing the personal support you need  
390805003



#### WINGNUT BINDING

Aluminum plate (1.6cm)  
4PCS: 463908001



#### WINGNUT FIN

2 PCS : 463808002



#### ATTITUDE PACKAGE

Attitude 139 + Explore Bindings  
Attitude 139 + Access Wake Sandals  
Size Explore Bindings: Standard, XL  
Size Access Wake Sandals: XS/S, M/XXL  
• Finally a board that actually performs like all riders want! It is easy to ride straight behind the boat when you wish to, but when you want to cut out hard and make turns, rolls and spins this board is also the one for you • Continuous rocker • Fiberglass and formica reinforced foam core • Ultra light RIM construction • Two 0.9" plastic center fins  
• Performance level: Intermediate • 8" insert setup  
Attitude 139 + Explore Bindings: 468812002  
Attitude 139 + Access Wake Sandals: 468812003





**FREEDOM PACKAGE**  
Freedom Combo + Promo Vest + Rope +  
Transp. Bag + Flag  
468811005

Freedom



Balance

### **FREEDOM / BALANCE**

Size: 67" / 170cm

- Beginner – Intermediate RIM combo pair
- Can be used as either combo skis or as an entry-level slalom
- Foam lined adjustable horseshoe bindings with trigger adjustment
- Tunnel shaped bottom for more stability
- Bright yellow fins for visibility

Freedom: 462010001 - Balance: 462011002

### **LYNX**

Size: 65" / 165cm

- Beginner–Advanced wide RIM combo pair
- Can be used as either combo skis or as an entry-level slalom
- Wider tip profile and double V bottom for additional stability with deep water starts
- Great skis to teach people how to ski and providing added confidence to skiers of all levels
- Foam lined adjustable horseshoe bindings with trigger adjustment
- Bright yellow fins for visibility

462011003



### **GLOBE JUNIOR PACKAGE**

Globe Junior Combo + Beat Vest +  
Rope + Transp. Bag + Flag  
468812001



### **GLOBE JUNIOR**

Size: 59" / 150cm

- Beginner – Intermediate RIM compair for junior skiers
- Can be used as either combo skis or as an entry-level slalom
- Foam lined heel adjustable horseshoe bindings with trigger adjustment
- Tunnel shaped bottom for more stability
- Bright yellow fins for visibility

462011001



### **HALLOWEEN TRAINER**

Size: 45" / 117cm

- Wooden marine coated combo pair for kids
- Adjustable horseshoe bindings with trigger adjustment
- Comes with special handle and rope attachment
- Extra towrope and handle included
- Bright yellow fins for visibility
- Stabilizing bar inserts
- Line between skis for stability

462008001



### **FRONT TOE**

Adult: 463505002  
Junior: 463505004  
Trainer: 463505006



### **SQUEEZE HEEL**

Adult: 463505003  
Junior: 463505005  
Trainer: 463505007



### **SLALOM TOE**

Adult: 463505001



### **SKI FLAG ORANGE**

462108003



### **COMBO FIN**

463508002



### **FIN TRAINER**

463508001







**SUNDOWN**  
 Deflated size: 48" / 122cm  
 • Nylon cover / Heavy duty PVC • 1 air chamber • Water drain and speed valve  
 • Rider capacity: 1 person  
 462311005



**SUNDOWN PACKAGE**  
 Included: Sundown, Wrist Seal, Quick Release, Orange Flag, Foot Pump and Rope for Towables  
 468808001



**ECLIPSE**  
 Deflated size: 54" / 137cm  
 • Nylon cover / Heavy duty PVC • 1 air chamber • Water drain, speed valve and buoyancy chamber • Rider capacity: 1 person  
 462309001



**G-FORCE**  
 Deflated size: 58" / 147cm  
 • Full nylon cover / Heavy duty PVC • 4 EVA foam soft-grip handles with neoprene knuckle protectors • 1 air chamber • Water drain, covered boston valve and buoyancy chamber  
 • Rider capacity: 1 person  
 462311004



**GIANT**  
 Deflated size: 71" / 181cm  
 • Nylon cover / Heavy duty PVC • 8 EVA foam soft-grip handles • 1 air chamber • Water drain, boston valve and buoyancy chamber  
 • Rider capacity: 3 persons  
 462307012

MAX. TOWABLE SPEED	
ADULT	32 KMH/20 MPH
YOUTH	24 KMH/15 MPH



**HELIX**  
 Deflated size: 50" x 53" / 127 x 135cm  
 • Full nylon cover / Heavy duty PVC • 4 EVA foam soft-grip handles with neoprene knuckle guards • 2 air chambers • Easy re-entry  
 • Water drains and covered boston valve  
 • Rider capacity: 1 person  
 462309006



**SLIDER**  
 Deflated size: 71" x 60" / 180 x 152cm  
 • Nylon cover / Heavy duty PVC • 4 EVA foam soft-grip handles with neoprene knuckle guards • 4 soft-grip handles for extra comfort and easy re-entry • 1 air chamber • Water drains, covered boston valve and buoyancy chamber • Rider capacity: 2 persons  
 462310001



**2 PERSON SHAKER**  
 Deflated size: 85" x 56" / 215 x 142cm  
 • Heavy duty PVC • 3 air chambers  
 • Rider capacity: 2 persons  
 462305003



**TWINS**  
 Deflated size: 76" x 60" / 193 x 152cm  
 • Nylon cover / Heavy duty PVC • 4 EVA foam soft-grip handles with neoprene knuckle guards • 1 air chamber • Water drains, covered boston valve and buoyancy chamber  
 • Rider capacity: 2 persons  
 462309003



**CRYPTO**  
 Deflated size: 53.5" x 55.5" / 136 x 141cm  
 • Nylon cover / Heavy duty PVC • 1 air chamber • Water drain, speed valve and buoyancy chamber • Rider capacity: 1 person  
 462309002



## DEVOCEAN ROCKET

Deflated size 2 men: 78" / 198cm  
 Deflated size 3 men: 109" / 277cm  
 Deflated size 4 men: 131" / 333cm  
 • Full nylon cover / Heavy duty PVC • EVA-foam filled comfort grip handles • Neoprene comfort seat pads • 3 Air chambers, including side floats • Quick connector • Water drains • Covered Boston valve and 2 speed valves  
 2 men: 462311001  
 3 men: 462311002  
 4 men: 462311003



## BOSTON VALVE

464108003



## HEAVY DUTY PUMP

• 3 PSI • EU Mainland • Ideal pump for larger items • Inflates a G-Force towable in 45 sec.  
 464108001



## FOOT PUMP HALKEY ROBERTS NOZZLE

Size: 12.5" / 32cm  
 • Capacity 2,000 cc  
 464108002



## CABLE BRIDLE

Galvanized hooks: 462105006



## ROPE BRIDLE

• Length of the rope can easily be adjusted  
 Galvanized hooks: 462108013



## WEB BRIDLE

• Length of the webbing can easily be adjusted  
 Galvanized hooks: 462105005



## MAGNUM BRIDLE

• Ideal for water sleds and multi person towables • Ultra strong karabiner style clips  
 462108004



## HEAVY DUTY TOW ROPE

Specs: 55ft / 17m  
 • For towing up to a maximum of four people • Ideal for water sleds and multi person towables • 16 strands, 84 filaments rope • break strength: 4100lbs/1859kg • Float attachment  
 462108014



## TOW ROPE FOR TOWABLES

Specs: 50ft / 15m  
 462105001



## QUICK RELEASE

• Large size Quick Release with rope and wrist seal • Fits all Devocean buckles that are attached to the tow points of towables  
 462108002



## WAKEBOARD COMBO DELUXE

• 4 section 70ft mainline • 5ft, 15" + 6" Smooth Rubber Grip Handle • Ultra low stretch line • Ideal for all levels of wakeboarding • V-grip handle for wrapped moves  
 462108006



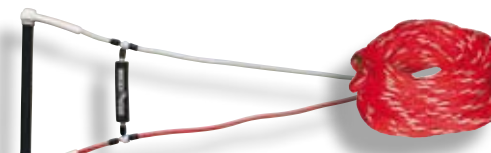
## WAKERIDER COMBO

• 70ft mainline • 5ft, 15" Smooth Rubber Grip Handle • Ultra low stretch line • Small weave  
 462108007



## WAKEBOARD ROPE

• 2 section 70ft mainline • 5ft, 12" Smooth Rubber Grip Handle • Small weave for wrapped tricks  
 462105008



## PERFORMANCE DEEP V+ MAINLINE

• 70ft mainline • 5ft, 15" Smooth Rubber Grip Handle • 16 strand deep V line for easier slalom starts • Finger protection on handle for safety  
 462108012



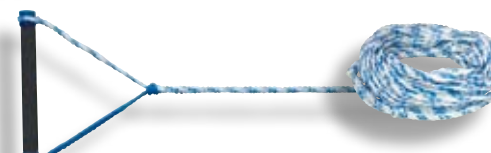
## CHALLENGE SERIES

• 4 section 70ft mainline with 5ft, 12" Machined Smooth Rubber Grip Handle • 8 section 70ft mainline with 5ft, 12" Smooth Rubber Grip Handle • Constructed from the finest polypropylene • Sectioned for the perfect rope length • 8 section version meets official comp. demands  
 4 Sec: 462108010 - 8 Sec: 462108011



## NOVA ROPE

• 60ft mainline • 5ft, 11" Machined EVA Grip Handle • 12 strand ski line • Finger protection on handle for safety  
 462108009



## RECREATIONAL SKI ROPE

• 60ft mainline • 5ft, 11" Smooth Foam Grip Handle with Wooden Bar • 8 strand ski line • Recreational and fun line  
 462105007





YOUR AUTHORISED DEALER: